

Friday 7th February 2025

King James's School Newsletter

Inside this issue:

- Quantum Theatre: Macbeth
- Year 10 Drama Assembly
- Travelling to school
- Sixth Form Applications and Post-16 Options
- School Attendance Gap Day
- The Week Ahead
- Careers
- Thought for the Fortnight
- Assemblies
- Mobile Phones
- Y11 Revision
- Maths Challenge

Message from the Headteacher

It was great to see so many students and parents at the Year 9 Options evening on Wednesday. Having the chance to personalise your curriculum and pursue your interests is such an exciting step for students, and there was a real buzz around the school as teachers, parents and staff discussed the options. Thank you to those who attended and to staff who showcased their subject.

Clare Martin
Headteacher



Travelling to school

You cannot have failed to have noticed the numerous sets of roadworks on the routes into school, which is resulting in a significant number of students arriving late into school in the morning. Please could we ask that this is taken into account when planning your child's journey to school and that additional time is factored in wherever possible.

Thank you for your support.

Quantum Theatre - Bringing Macbeth to life

On Tuesday 4th of February, we had the pleasure of hosting Quantum Theatre, who brought Shakespeare's Macbeth to life in an exclusive performance for our Year 11 students. The dynamic portrayal of the classic texts deepened students' knowledge of the characters, plot, themes and stagecraft, crucial for their GCSE English Literature examination. The Quantum Team and their four-person cast used their acting skills, lighting and sound to significantly enhance students understanding and the production was well-received by all our students. Year 11s were a credit to the school, actively engaged throughout and reflective during feedback sessions in English lessons. The English department would like to thank both Quantum Theatre and the whole of Year 11 for making this event such a success!



Year 10 Drama Assembly

This morning, Year 10 students watched a performance titled: "She Was Walking Home", produced by the Next Door But One Community Arts Collective. The performance addressed important issues surrounding safety and harassment in public spaces, with a focus on the experiences of women. In 2021, the Office for National Statistics revealed some concerning statistics: one in two women felt unsafe walking alone at night, and two out of three women aged 16-34 reported experiencing some form of harassment in the previous year. The show brings these statistics to life by telling real, personal stories.

We were grateful to receive this impactful performance and the important issues it raised around safety, respect, and awareness in our community.



YR11 - Sixth Form Applications & Post 16 Options

It has been an interesting week for YR11, on Thursday they had the opportunity to consider their post GCSE options. Those considering a Sixth Form or L3 application took part in our Sixth Form Taster Day. They got the opportunity to sample five Sixth Form subjects and enjoyed their break and lunchtime in the Sixth Form centre. This should help them to make their Sixth Form subject choices and get the feel what it's like to be a Sixth Form student.



Further details about our Sixth Form and the courses available can be found in our Sixth Form Prospectus https://king-james.co/6thFormProspectus2025_26/

The deadline for applications is Friday 14 February, the application form is available here <https://www.king-james.co.uk/joining-our-sixth-form/>

If you have any questions about joining the Sixth Form, please email sixthform@king-james.co.uk



School Attendance Gap Day – Tuesday 4th February 2025

School Attendance Gap Day is a new awareness day. It marks the mid-point of the academic year, and for students with 50% or less attendance it would effectively be their last day with them being absent for the remainder of the year. In England, this is the case for 158,000 'severely absent' children – a number that has increased by 149% since the pandemic.

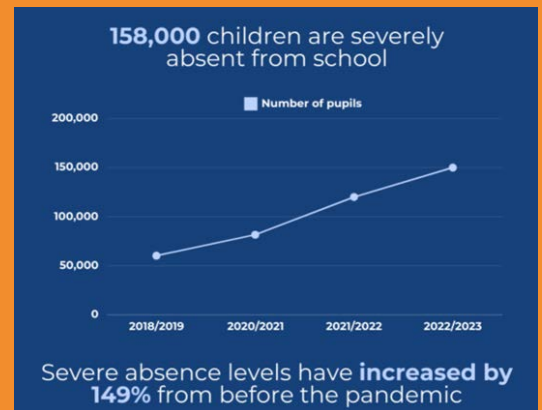
Please see below the significant long-term consequences of absence.

If you require any support to improve the attendance of your child then please get in touch with your Year Teams.

The long term consequences of absence

The long term consequences of lost learning are significant, contributing to cycles of poverty, missed opportunities and lost potential.

- **Lower Attainment.** There is a proven correlation between school absence and school attainment. Data from the Children's Commissioner report 'Missing school, missing grades' reveals that 78% of pupils who were rarely absent in both years passed at least 5 GCSEs, including English and Maths, in 2022. By comparison, just one in twenty pupils who were 'severely absent' met the same standards.
- **Reduced Social Mobility.** The Social Mobility Commission views NEET (not in education, employment or training) as a key indicator for social mobility. Research has found that 'persistently absent' children and young people (missing 10% or more of education) are 3.9 times more likely to be NEET and 6.3 times more likely to be persistently NEET.
- **Risk of School Exclusion.** The Who is Losing Learning Coalition has found that children who are 'severely absent from school' are also **five times more likely** to be permanently excluded than the national rate, suggesting that severe absence may correlate with behavioural problems that schools do not have the capacity to address.
- **Exposure to Harmful Influences.** School provides a strong protective effect from harmful influences. Analysis from the CSJ in 2023 indicated that the rising rates of school absences could create an extra 9,000 extra young offenders by 2027 if left unresolved.



The Week Ahead: 10th February 2025

Day	Session	Year	Time	Location
Mon				
Tue				
Wed	Queen: A KJS Concert 1		7.00pm	S1
Thur	Queen: A KJS Concert 2		7.00pm	S1
Fri	First Half Spring Term Ends Y9 Ski Trip departs Y9 Options Deadline Sixth Form Application Deadline	9 9		Obertauern, Austria

Careers

National Apprenticeship Week

**NATIONAL
APPRENTICESHIP
WEEK 2025** 10-16 February

National Apprenticeship Week takes place from 10-16th February. We will be raising the profile of Apprenticeships throughout the week through tutor time, lessons and assemblies.

We have ASK Apprenticeships coming into school to deliver presentations to Year 10, 12 and 13 and this is followed by a Q&A session. All subject areas have posters on display that provide students with information on the different apprenticeships on offer linked to each subject area.

There is a wealth of information available on Parent Zone section of the Amazing Apprenticeships website. You can access this information [HERE](#). The information available aims to develop your knowledge and understanding of apprenticeships which will help you to advise and guide your child.

Virtual STEM Event

We have a fantastic opportunity for Year 11, 12 & 13 students interested in STEM to explore career pathways in engineering, technology, and data science while connecting with industry leaders.

This virtual STEM event takes place during National Apprenticeship Week on Monday, 10th February 2025 (5:00pm-6:30pm). At this event, you will hear from top STEM companies, including:

- Spectris (Keynote Speaker) – A global leader in precision instrumentation and advanced technologies.
- Legal & General – Find out how STEM professionals shape the financial sector.
- National Grid – Understand how STEM skills power the future of energy.
- Wates – Learn about engineering and technical roles in construction and property development.

If you are interested in this event, please register here: <https://www.surveymonkey.com/r/YP-STEM-NAW>

Assemblies

We welcome ASK Apprenticeships into school on Thursday as part of National Apprenticeship Week. They will be delivering a presentation to Year 10, Year 12 and Year 13 and also running a drop in Q&A session for Year 12 and Year 13.

We also have our School Liaison Officer, PC Powell coming into school on Wednesday and Thursday to deliver assemblies to all year groups on the dangers associated with snus.

Detailed information about snus and its effects can be found [here](#).

Thought for the Fortnight

Thought for the Fortnight for the weeks beginning 3rd and 10th February is linked to Time to Talk Day and Children's Mental Health Awareness Week.



'A problem shared is a problem halved'.

Key take aways are:

- Opening up about your struggles and worries can ease the weight on your mind, provide support and lead to solutions.
- Sometimes writing is easier – check in with a friend over text.
- Talking side by side can be easier – try talking while walking.
- Listening is just as important as talking – ask someone how they are feeling.

Mobile Phones



You may have seen in the news this week, the research findings that spending longer on smartphones and social media in general was linked with worse outcomes in terms of grades and mental health and wellbeing. The suggestion is that 'We need to do more than just ban phones in schools' and we need to reduce time students spend on their phones. Clearly, parents and schools need to work together to do this. A useful guides on how to limit screentime can be found below:

[A guide to parental controls](#)

Year 11 Revision

It was great to see over 40 Year 11 students attending English revision clinic this week.



UK Maths Trust's Intermediate Maths Challenge

Last week 120 of our elite mathematicians in Years 10 and 11 took part in the UK Maths Trust's Intermediate Maths Challenge.

We are delighted to have been awarded 5 Gold, 18 Silver and a whopping 43 Bronze.

Special mentions to James L in Year 11 for achieving the "best in school" award and Humphrey F for his "best in Year 10" score. They will both be joined by Angus L from Year 11 in the follow-on round.

Well done to all who participated and therefore gained house points for their houses!

For any puzzlers, the first five questions are below and the full challenge and answers can be accessed [here](#).

1. What is two-fifths of the recurring decimal $0.\dot{2}5$?
A $0.\dot{1}$ B $0.0\dot{1}$ C $0.0\dot{1}\dot{1}$ D 0.10 E $0.\dot{1}\dot{0}$
2. A *twip* is a very short unit of length, derived from imperial units, and is equal to approximately 0.000018 metres. A *league* is a long unit of length which is equal to approximately 4800 metres. Roughly how many twips are there in a league?
A 270 000 000 B 27 000 000 C 2 700 000 D 270 000 E 27 000
3. Two standard dice are placed on a table, with one on top of the other, so that only nine of the faces of the dice may be seen. The touching faces have the same number on them. The sum of the numbers on the visible faces is 33.
What is the number on the touching faces?
A 1 B 2 C 3 D 4 E 6
4. The sizes of the three angles in a triangle, in degrees, are x , $7x$ and x^2 .
What is the size of the largest angle?
A 10° B 18° C 100° D 120° E 121°
5. When $4^5 \times 5^4$ is correctly calculated, how many digits are there in the answer?
A 4 B 6 C 10 D 16 E 20

North Yorkshire support for young people's Mental Health

There is national and local support for young people, parents, carers and professionals on the Go-To website.

www.thegoto.org.uk



SCAN ME

The Go-To

For healthy minds in North Yorkshire

NHS